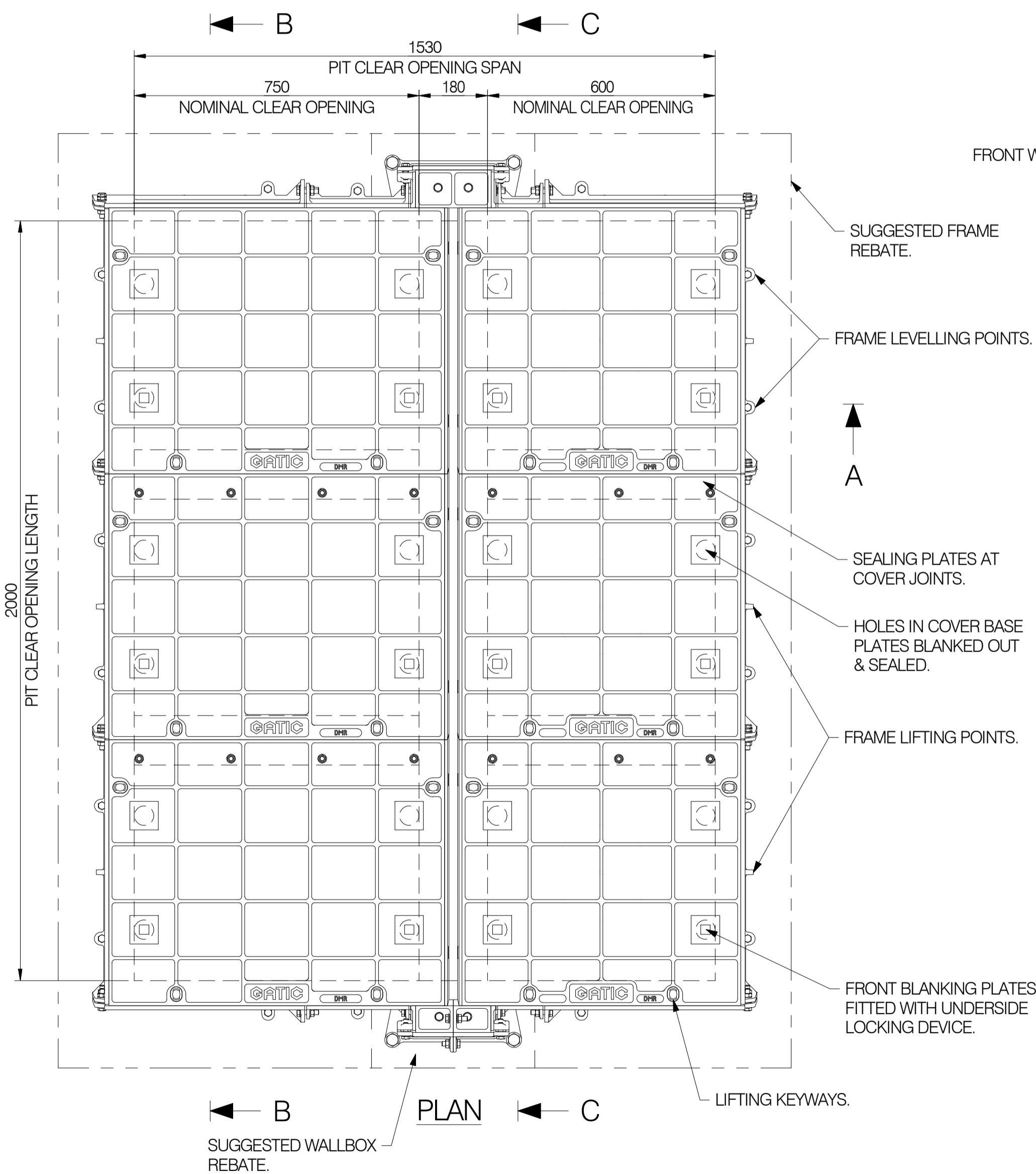
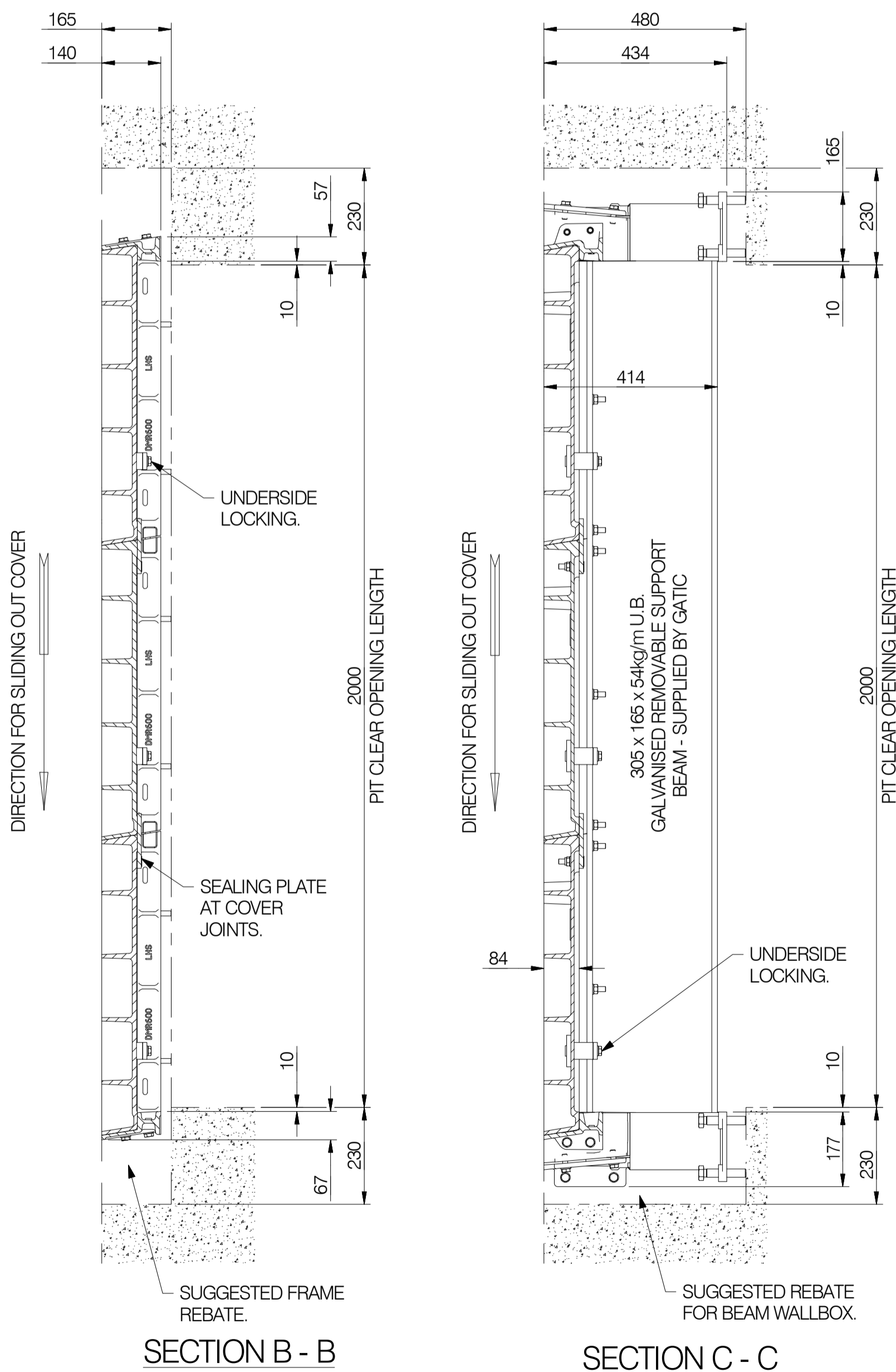
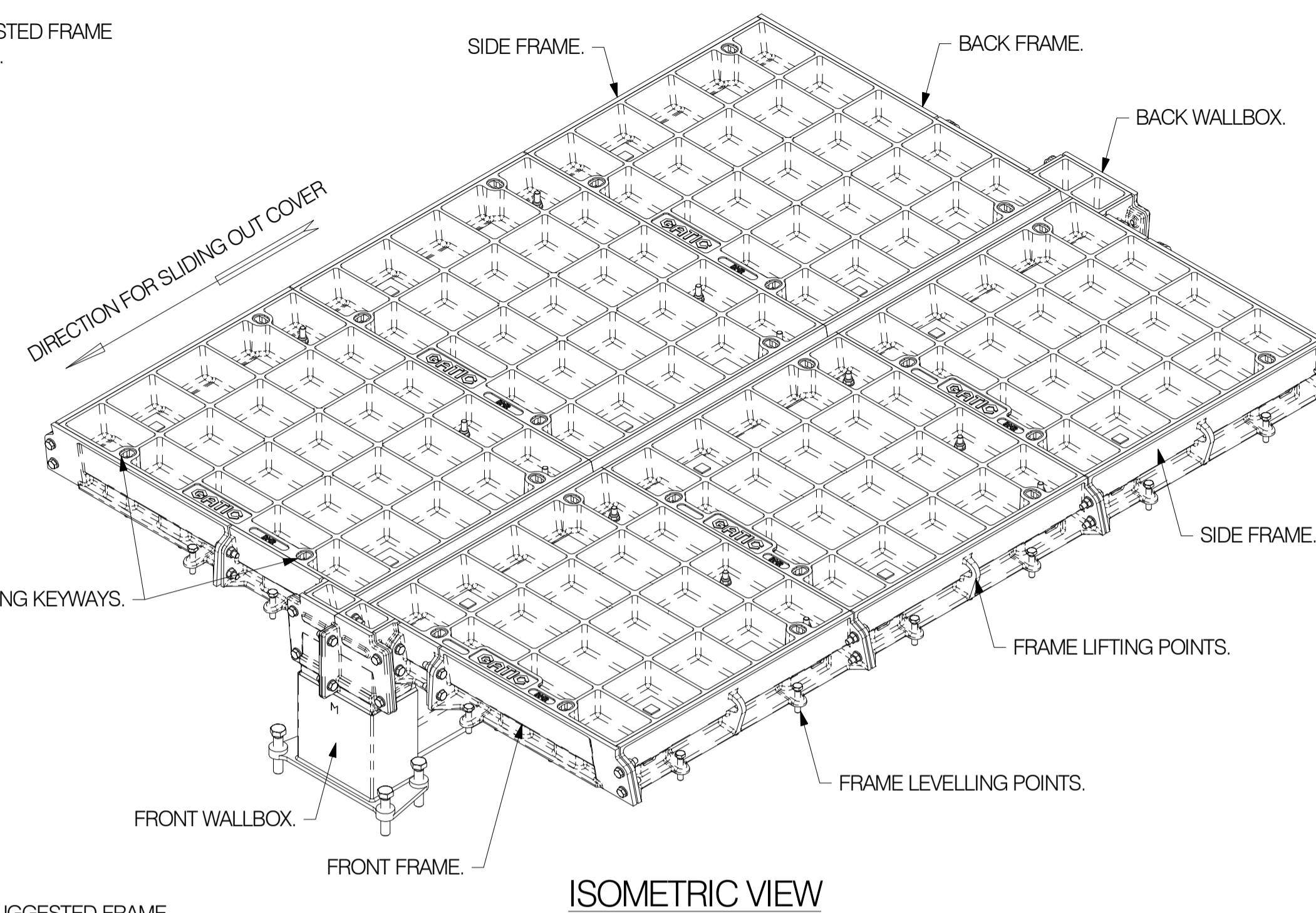
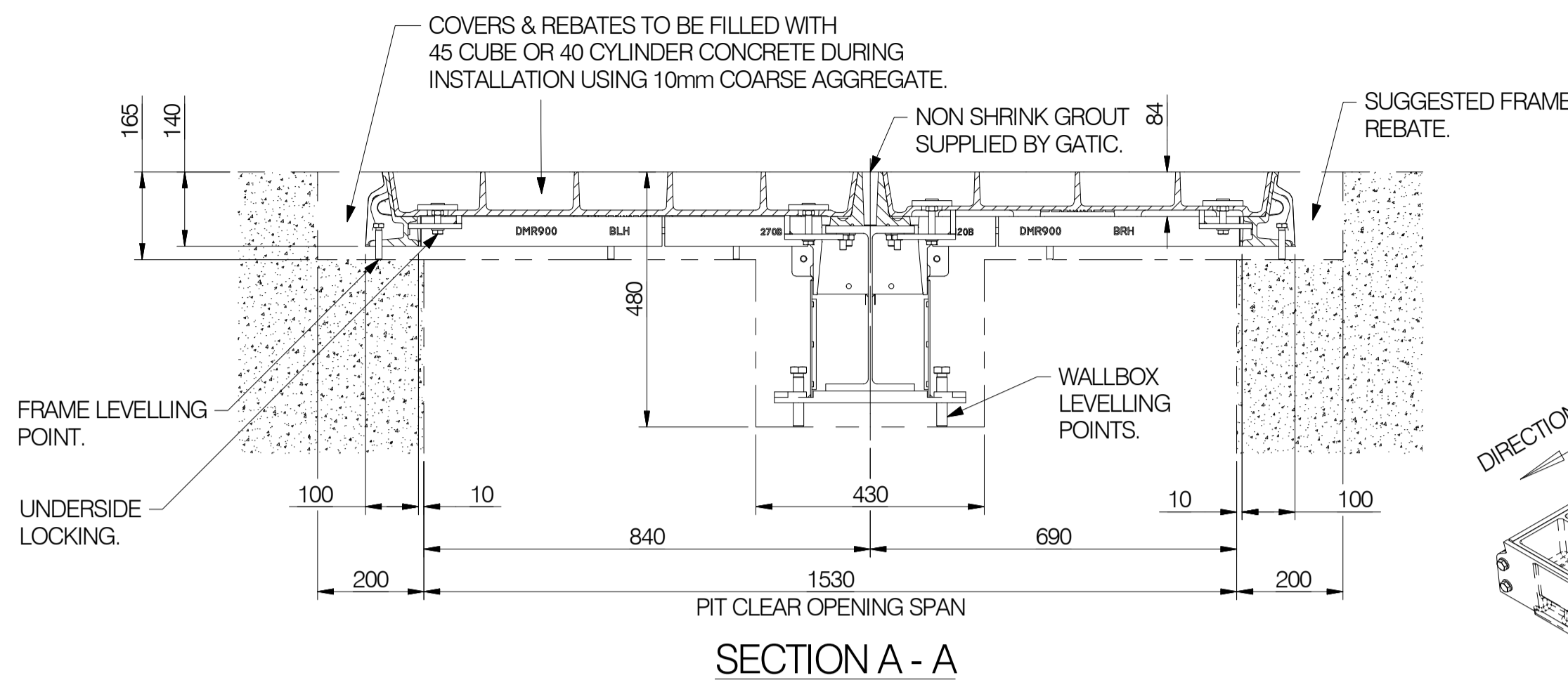
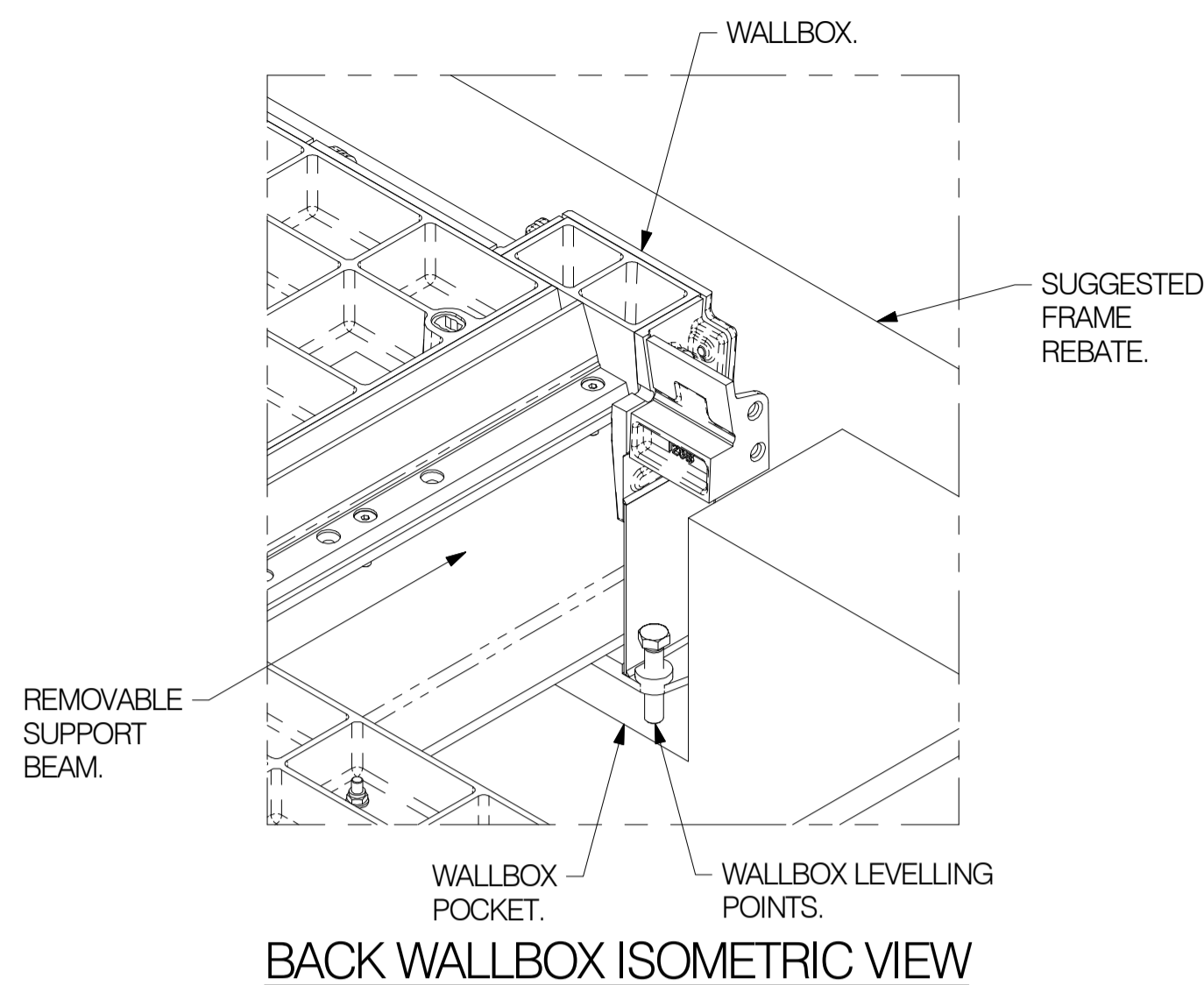


Abbreviations:  
 C = Centre Line NOM = Nominal C/O = Clear Opening O/A = Overall

DO NOT SCALE

This drawing and any information or descriptive matter set out hereon are confidential and the copyright of GATIC, and are not to be disclosed, loaned, copied or used for manufacturing or tendering or for any other purpose without permission © 2013. In furtherance of our policy of continual development we reserve the right to change the design of the components incorporated hereon without notice.

Rev.	Revision	Date	Sig
A	FIRST ISSUE	24/10/2013	K.F.



**NOTES:**

- ALL DIMENSIONS ARE IN MILLIMETRES (mm).
- MATERIAL:  
 COVERS & FRAMES - DUCTILE CAST IRON TO BS EN ISO 1563 : 2011' (SPHEROIDAL GRAPHITE) GRADE 600/3.  
 REMOVABLE SUPPORT STEEL WORK - STRUCTURAL STEEL SECTIONS TO 'BS 4-1 : 2005'.
- FINISH:  
 UNITS ARE COATED WITH A BLACK BITUMINOUS SOLUTION THAT ACTS AS A TEMPORARY PROTECTION DURING TRANSIT.  
 REMOVABLE SUPPORTING STEEL WORK - GALVANISED TO BS EN ISO 1461 : 2009.
- TEST LOADING:  
 TO BS EN ISO 124 : 1994' - D400.  
 SUITABLE FOR 11.5 TONNE WHEEL LOAD.
- UNIT IS SUPPLIED WITH UNDERSIDE LOCKING FOR ADDED SECURITY.
- BEFORE COMMENCING SITE INSTALLATION REFER TO SETTING INSTRUCTIONS SUPPLIED AND GATIC MULTISPAN INSTALLTION TUTORIAL AVAILABLE FROM [www.gatic.com/tutorial](http://www.gatic.com/tutorial).

2000 x 1530mm PIT CLEAR OPENING GATIC 6 PART RECESSED MULTISPAN COVER & FRAME COMPLETE WITH ONE REMOVABLE SUPPORT BEAM - TYPE DMR  
 PRODUCT CODE - GA/M/M/2000/1530/D/UKPN/USL

**COVER WEIGHT**

COMPLETE SUPPLIED UNIT WEIGHT - 911 kg  
 600 x 750 DMR COVER ONLY WEIGHT (UNFILLED) - 97kg  
 600 x 750 DMR COVER ONLY WEIGHT (FILLED) - 165kg  
 600 x 600 DMR COVER ONLY WEIGHT (UNFILLED) - 74kg  
 600 x 600 DMR COVER ONLY WEIGHT (FILLED) - 138kg  
 BEAM ASSEMBLY WEIGHT - 201kg

COVER MAKE UP  
 3 - 600 x 750 DMR NOM. C/O. COVER  
 3 - 600 x 600 DMR NOM. C/O. COVER

**GATIC**

Specialised Engineering. Special Advice.

Poulton Close Dover, Kent  
 CT17 0UF, England  
 Telephone: +44 (0) 1304 203545  
 Fax: +44 (0) 1304 215001  
 E-Mail: [info@gatic.com](mailto:info@gatic.com)  
 Web: [www.gatic.com](http://www.gatic.com)  
 A division of ALUMASC LIMITED.

**GATIC Access Covers**

Drawn by	K.F.	2000 x 1530mm PIT CLEAR OPENING GATIC 6 PART RECESSED MULTISPAN COVER & FRAME COMPLETE WITH UNDERSIDE LOCKING - TYPE DMR	Rev.	A
Checked by	B.T.		Date	24/10/2013
Scale	1:10	Drawing Number	GA/M/M/2000/1530/D/UKPN/USL	