

GATIC
 Poulton Close,
 Dover,
 Kent, CT17 0UF
 United Kingdom
 Telephone: +44(0) 1304 203545
 Facsimile: +44(0) 1304 215001
 Email: info@gatic.com Web: www.gatic.com
 VAT Reg No: GB 395 9417 96

DATA SHEET REF.

UKPN / DAL / 1

Cl/SfB

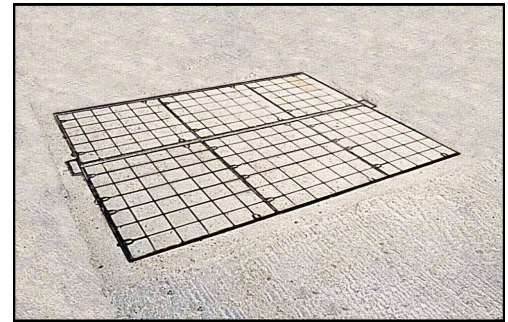
52.9 Xh

October 2013

GATIC

Specialised Engineering.
 Special Advice.
 Heavy Duty Plant Access Hatch Covers & Frames

For use with UK Power Networks Substations



Product Specification:

GATIC Ductile Iron Multispan Cover & Frame. - Type DMR
 Suitable for loadings up to Heavy Duty D400 - 11.5 Tonne Wheel load.

Clear Opening Size 2000 x 1530 mm, cover in 6 parts supported by a perimeter frame and 1 - no. 305 x 165 mm galvanised Removable Beam spanning the 2000mm way (Positioned off centre). Removable Beam supplied by GATIC.
 Details shown on GATIC Drawing No. GA/M/M/2000/1530/D/UKPN

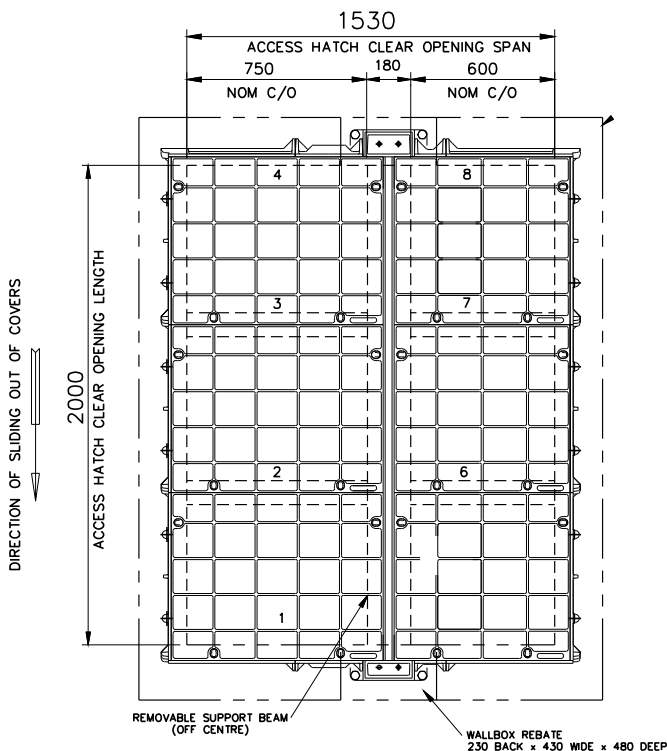
Note: GATIC Type DMR covers are designed to inhibit removal by unauthorised personnel. However, additional security can be provided by utilising a unique underside locking feature available when specified.
 Details shown on Gatic Drawing No. GA/M/M/2000/1530/D/UKPN/USL

Tolerances:

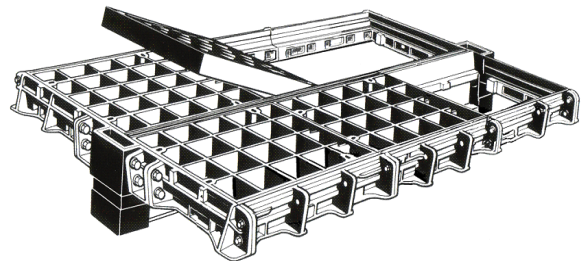
The seating faces of all GATIC Type DMR covers and frames are machined so that when positioned together, the metal to metal contact achieved is within a tolerance of 0.25 mm.

Watertight:

The interposition of a film of graphite grease between the contacting seating faces of the GATIC Type DMR units provides a gas and airtight seal, and a watertight joint under normal rainwater conditions.



PLAN OF GATIC TYPE DMR ACCESS HATCH COVER



Beams & Wallboxes:

The supporting beam can be easily removed with appropriate lifting equipment. This provides a clear opening of 2000 x 1530 mm. Removable Support Beam supplied by GATIC. Beam Wallboxes are positioned so that they do not project into the Plant Access opening.

Location:

Plant Access Hatches for Substation/HV. Switchroom applications should be located outside Substation / HV. Switchroom. Exact position and orientation to be agreed with UK Power Networks prior to installation.

Note: Full Installation instructions & drawings are supplied with goods or on request. An installation tutorial is also available to download online. A full design service can be provided for the above units and other cover configurations.
 Tel: +44(0) 1304 203545 Fax: +44(0) 1304 215001 Email: info@gatic.com Web: www.gatic.com

